

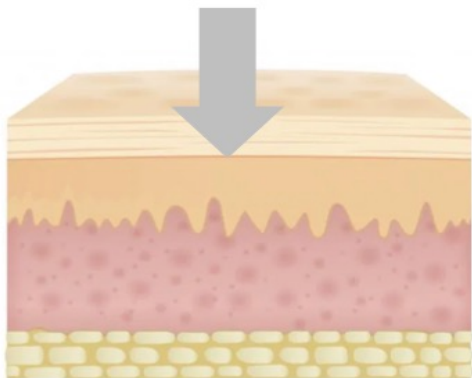
# GENIUS<sup>+</sup>

*Hyaluronic Acid Dermal Filler*

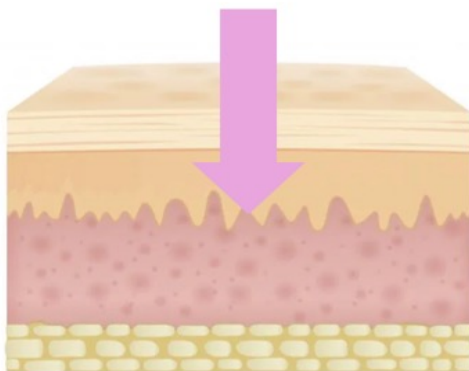


*A Stroke of Genius...*

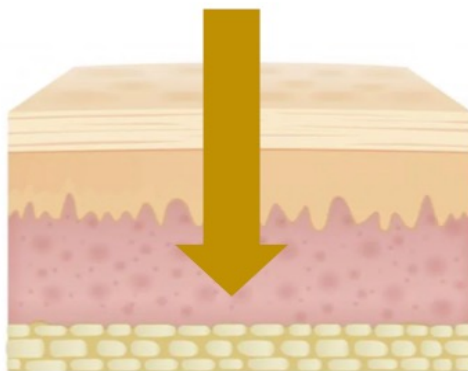
	SMOOTH	DEFINE	ENRICH	ULTRA
REF	MPF10S	MPF10M	MPF10H	MPF10U
Concentration	24 mg/mL			
Particle size	200 um	400 um	600 um	900 um
Needle size	30G TW x2	27G TW x2	25G TW, 27G TW	25G TW, 27G TW



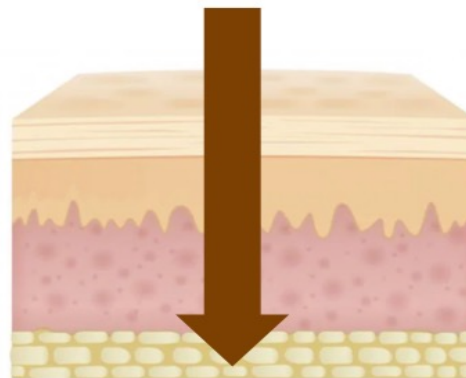
Superficial Dermis



Superficial to mid  
dermis



Deep dermis



Subcutis to  
periosteum

Epidermis  
Mid Dermis  
Deep Dermis  
Subcutaneous tissue  
Periosteum

# Our Range:

## SMOOTH

- Fine lines & wrinkles
- Tear troughs
- Russian lips
- Necklace lines
- Hyaluron pen
- Mesotherapy

## DEFINE

- Perioral lines
- Natural lips
- Moderate wrinkles
- Frown lines

## ENRICH

- Firm lips
- Lip volume
- Nasolabial folds
- Marionette lines
- Deep wrinkles
- Chin

## ULTRA

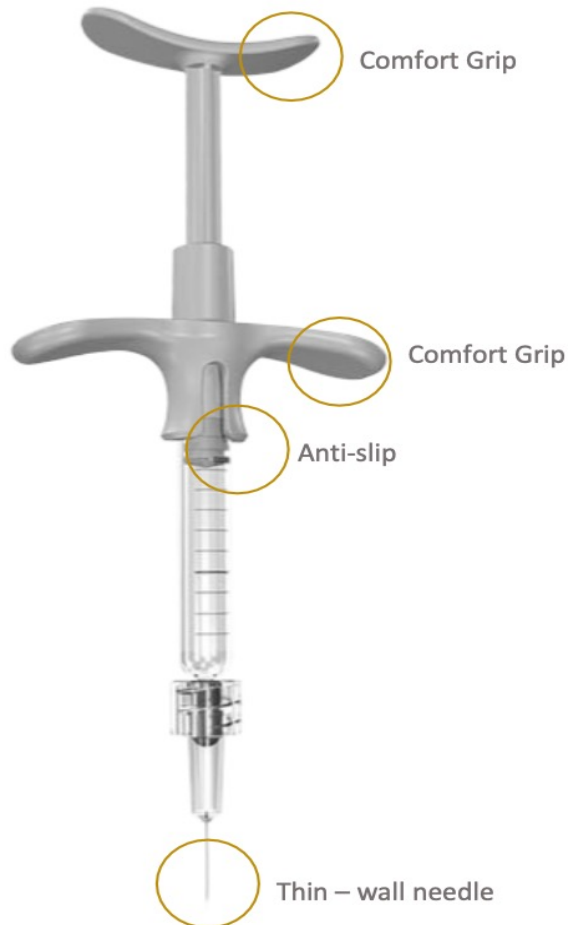
- Nose
- Cheek
- Jawline



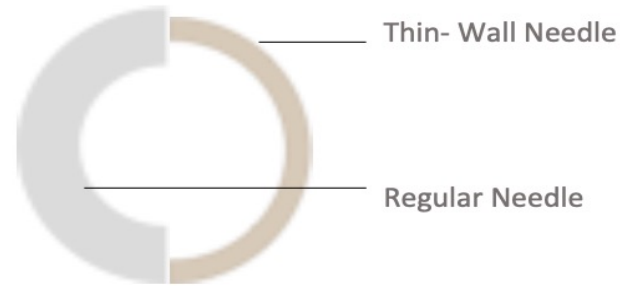
# Ergonomic Design

## Easy Operation

Ergonomically designed grip and push rod provides accurate and safe treatment with constant injection forces. Allows the user to perform various injection techniques according to treatment site



### Needle



### Grip



GENIUS<sup>®</sup>

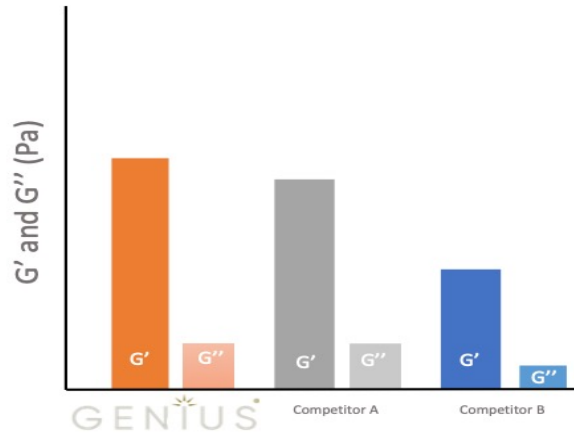
- 30G TW needle for Smooth type
- 27G TW Needle for Define, Enrich & Ultra type  
(25G TW needle for Enrich and Ultra type: depends on user)

# Hy-BRID Technology

## Better Volume Effect and Retention

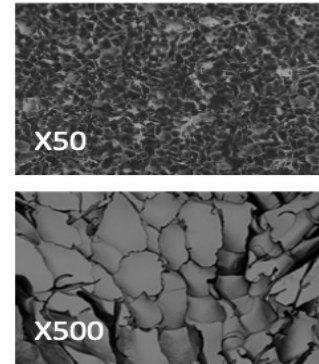
The Hy-BRID Technology makes the hyaluronic acid highly dense with uniform sized particles  
This enables GENIUS to have optimal viscoelasticity and long-lasting volume

### Viscoelasticity



G': Storage modules / G'': Loss Modules

### Lattice Structure (SEM, Scanning Electron Microscope)



## Safety

### Safe to Use on Patients

The manufacturing process is tightly controlled to bring the endotoxin and BDDE (chemical crosslinker) levels below the detection limit. The risk of adverse side effects (allergic reaction, oedema, etc.) are minimized.

### Performance Test

GENIUS

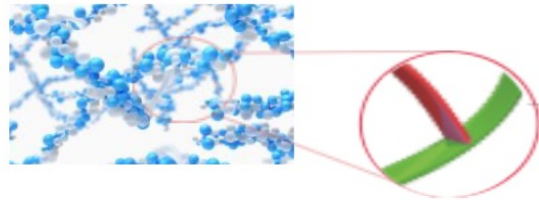
	Standard	Results
Appearance	No impurities, transparent and colourless gel	Pass
HA Concentration	21.6 ~ 26.4 mg	24.1 mg
pH	6.5 ~ 7.5	7.10
Residual BDDE	< 2 ppm	<b>Not Detected</b>
Endotoxin	< 20 EU	<b>&lt; 0.100 EU</b>
Volume	< 1.0 ml	Pass

### \*What is BDDE (1,4-butanediol diglycidyl ether, cross-linking agent)?

BDDE (1,4-butanediol ether) is a chemical cross-linking agent to make hyaluronic acid into gel form.  
The residual amount of BDDE is strictly regulated to less than 2 ppm. It was not detected in every GENIUS Filler.

## \*Hy-BRID Technology

Hyper Cross-linked  
Based on non-animal HA  
Residue-free  
Improved Density and elasticity





# Downloadable Assets

- FREE Marketing Images
- FREE Support from a Team of Experts
- FREE Medical Questionnaire and Consent Form
- FREE Professional Commercial
- FREE Pop-Up Banner

GENIUS<sup>+</sup>  
Hyaluronic Acid Dermal Filler



GENIUS <sup>+</sup>	
POST TREATMENT	
<b>Expect:</b>	Some redness Swelling Tenderness (Occasionally bruising)
<b>Action:</b>	These are short term and will subside within a few days. Although it can take up to 2 weeks for dermal filler to completely settle down.
	<b>DO NOT</b> rub or massage the area.
	<b>DO NOT</b> use makeup for 12 hours following treatment.
	<b>DO NOT</b> use sun beds / saunas / steam rooms and avoid extreme temperatures.
	If you have any concerns, contact your practitioner immediately.

If you experience any questions or concerns, it's important that you contact your practitioner immediately.

# GENIUS<sup>+</sup> Accessories



## Genius Marking out pencil

Marking out pencils are essential for any aesthetician to have in their kit to mark areas of interest. White cosmetic wax pencils are used for marking prior to aesthetic procedures



## Genius rose oil lip balm

Rose oil infused lip balms are clinically proven to help soothe and repair lips after treatment or to be used as a daily hydrating lip balm.



## Genius Arnica gel

Arnica gel has anti-inflammatory and pain-relieving properties which means it is great for reducing any bruising or swelling. It is the perfect aftercare product.



## Genius Pre-injection swabs

Pre-Injection swabs are used to ensure that the skin is clean and disinfected before injections

# CONTACT US



Info@geniusltd.co



Sales@geniusltd.co



Training@geniusltd.co



GeniusLTD



Geniusfiller



07874464902



[www.geniusfiller.com](http://www.geniusfiller.com)